



BALLARD

MARINE CONSTRUCTION

SPECIALTY UNDERWATER
AND MARINE CONTRACTOR





About Ballard

BALLARD MAINTAINS A PROVEN TRACK RECORD OF SAFE, EFFICIENT, AND INNOVATIVE MARINE CONSTRUCTION SOLUTIONS.

Ballard Marine Construction, LLC (Ballard) has been working in the heavy civil marine construction industry since the 1970s; provided turnkey infrastructure inspection, construction, rehabilitation, and maintenance solutions on projects worldwide since our inception. Ballard has always taken an innovative approach to providing highly technical heavy civil marine and underwater solutions to our local, national, and international clients in the power, transportation, environmental, water and wastewater, and industrial industries.

Ballard has partnered with the Traylor Construction Group, a family of companies, to offer a complete range of services solving North America's heavy civil and marine infrastructure challenges.

What Sets Us Apart...

An award-winning, nationally recognized heavy civil marine contractor, Ballard provides technical solutions and support on all phases of infrastructure assessment, construction, rehabilitation, and maintenance.

Ballard offers a vast array of services that support power, transportation, environmental, water/wastewater and industrial clients. Our association with Traylor Construction Group gives Ballard access to their depth of heavy civil experience.

Above or below the waterline, Ballard is your complete marine construction contractor.

**Unparalleled
Technical Solutions
Provider**

**Trusted Partner
of Private Utility
Clients
Nationwide**

**Exceptional
Safety
Record**

**Expert in
Remote Access
and Challenging
Logistics**





Safety Is All About People

Each employee plays an integral role in the overall success or failure of our safety program. True to our culture, every employee has an equal responsibility to promote and protect safety in their daily work, regardless of their position or seniority.

Employee-Led Safety Program

Our best program improvements come directly from the feedback and ideas we receive from our front-line employees. They speak, and we listen. Every employee has the authority to stop unsafe work, correct hazards, and report issues without fear of reprisal; and everyone is equally held accountable for their actions and behaviors. We maintain an employee-led safety program supplemented by in-house and third-party audits and program evaluations.



Market Overview

WHERE BALLARD EXCELS

Ballard's commitment to providing our clients practical and cost-effective solutions on projects of all magnitudes is second to none.

Ballard's unequaled service-oriented and quality-minded approach has made us a leader in the topside marine and underwater construction industry.

We are internationally known for our innovative and efficient construction solutions. Our highly technical team collaborates and supports our engineering partners and clients with creative solutions at all phases of the project from initial inspection through the constructability phase, completion, rehabilitation, and eventual maintenance.

In all the markets we serve, Ballard excels at partnering with the client to ensure a facility's service life is maximized. This is done through our turnkey solution offering starting with inspection and survey. Through this process, we identify areas for improvement and then work with the client to develop a well-engineered solution to resolve the issue.

Ballard rehabilitates or repairs the asset and establishes a maintenance plan with regular service to extend the service life of the asset, mitigating the need for emergency repair work.



Market Overview



POWER

FOSSIL • HYDRO • NUCLEAR AND RENEWABLE FACILITIES

Ballard offers unique technical solutions that are routinely utilized in active systems including fossil, hydro, nuclear and renewable facilities. With a history of providing turnkey, innovative and cost-effective solutions, Ballard's services are delivered in planned or emergency situations throughout the project's lifecycle. Ballard's successful history of working on projects of various sizes and scopes, for both private and government clients, provides our customers the confidence that their job will be done safely and right.

- Inspection and Survey - ROV, AUV, and Diver Assisted
- Debris and Sediment Removal
- Gate Rehabilitation and Installation
- Trash Rack and Stop Log Removal and Replacement
- Outlet, Intake and Tunnel Rehabilitation



TRANSPORTATION

BRIDGES • TUNNELS • MARINE AND PORT FACILITIES

Ballard routinely provides repair, replacement, maintenance, and demolition services for transportation structures nationwide including locks and dams, bridges, tunnels, and marine and port facilities. We are also an experienced leader in providing hyperbaric support services to major tunneling projects around the world. Finally, our team has performed thousands of repairs, cathodic improvements, and installations of waterfront structures both locally and worldwide.

- Inspection and Survey - ROV, AUV, and Diver Assisted
- Underwater Demolition
- Hyperbaric Services
- Pile Driving, Rehabilitation, and Installation
- Cathodic Protection Systems

Market Overview



ENVIRONMENTAL

MARINE SALVAGE • SPILL RESPONSE • WASTE REMOVAL

With a proven track record of safe, efficient, and innovative marine salvage and spill response services, Ballard has established itself as a trusted United States Coast Guard Response Contractor. Ballard possesses a unique ability to mobilize salvage assets, containment booms, and self-propelled skimmers quickly and effectively. Our integrated salvage and spill response capabilities ensure a rapid response to any marine casualty, mitigating environmental threats. Ballard's award-winning dredging services have made us an industry leader in environmental services in the removal and disposal of hazardous waste.

- Vessel and Marine Structure Salvage
- Hazardous Material Collection and Disposal
- Spill Response
- Environmental Mitigation
- Emergency Rescue Repair and Towing



WATER/WASTEWATER

WASTEWATER • RESERVOIRS • RAW WATER • PROCESS AND COOLING

Ballard regularly performs underwater repairs and structural rehabilitation at scheduled inspection and maintenance intervals (outages) and during emergency situations supporting a wide variety of industries including paper, refineries, wastewater treatment plants, potable water reservoirs and other industrial sites. Whether planned, or unplanned, plant and facility down time impacts profits. Ballard can provide in-the-wet repair solutions reducing system outages, overall costs, and schedule risks.

- Inspection and Survey - ROV, AUV, and Diver Assisted
- Large Diameter Pipeline Rehabilitation
- Intake Structures and Screens
- Oxygenation Systems
- Concrete Repair and Leak Sealing

Market Overview

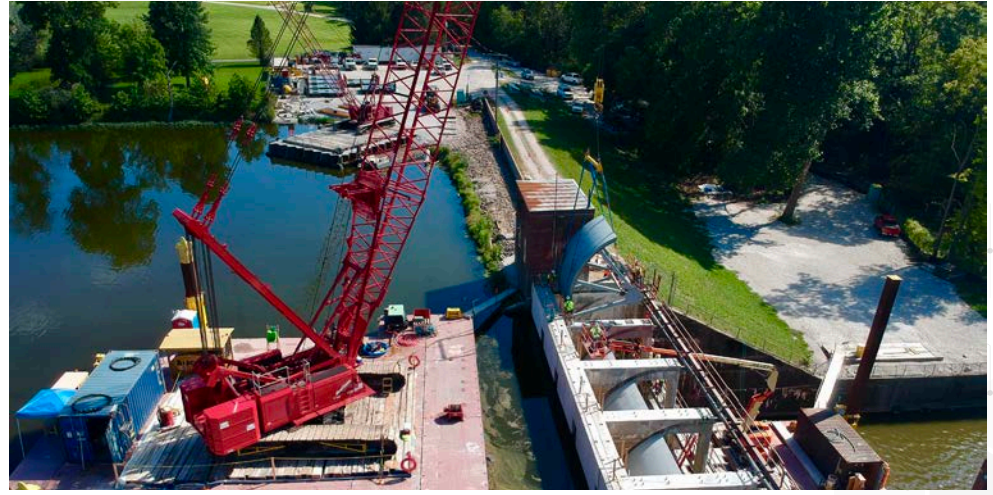


INDUSTRIAL

OIL • GAS • METAL • PULP • PAPER • STEEL

Ballard applies innovative solutions with assets located in marine areas to provide rapid response to utility clients nationwide including oil, gas and other chemicals, metal production, and pulp, paper, and steel mills. Ballard self-performs a wide array of underwater and civil marine construction activities in support of industrial facilities including Remotely Operated Vehicles (ROV) to collect imaging sonar and laser scanning to increase safety and cost-efficiency. Through the use of sophisticated and Autonomous Underwater Vehicles (AUV), we can collect multi-beam, side-scan, bathymetric, water sensor, and internal position data within very tight tolerances.

- Confined Space Inspection and Survey
- Hazard Waste Diving
- Intake and Outfall System Rehabilitation
- Underwater and Topping Welding
- Trash Rack Repair and Cleaning



ALTERNATIVE DELIVERY

ECI • DB • CMAR • CMGC

Ballard's experience in the alternative delivery market ranges from prime contractor, valued team member, to joint-venture partner, and key subcontractor. Our team's Early Contractor Involvement (ECI) approach is particularly beneficial in facilitating the transition from pre-construction to the construction phase. Ballard has decades of experience working in the spirit of collaboration, trust, and partnership with design teams and owners resulting in an efficient approach that can save money through limited change orders and produce successful project deliveries.

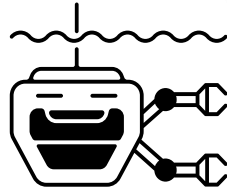
- Early Contractor Involvement (ECI)
- Design-Build (DB)
- Progressive Design-Build
- Construction Manager at Risk (CMAR)
- Construction Manager/General Contractor (CMGC)

Ballard's Integrated Approach

INTERCONNECTED CLIENT SERVICE AT EVERY LEVEL AND EVERY PROJECT STAGE

Inspection and Survey

Providing highly technical inspection and survey services for national and international clients, Ballard's unequaled service-oriented and quality-minded approach has made us a leader in the underwater market.



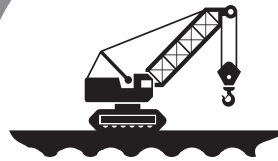
Maintenance

With a proven track record of safe, efficient, and innovative maintenance efforts, Ballard has a reputation for preserving and extending the service life of infrastructure. Our asset maintenance plans have a proven success record for mitigating emergency repair work.



Construction & Rehabilitation

Ballard is internationally known for our innovative and efficient turnkey construction solutions. Ballard is a general contractor who not only manages, but routinely self-performs the challenging scopes of a project to ensure client satisfaction through real-time transparent communication.



Engineering & Constructability Support

Ballard's underwater/marine engineering and technical staff work to support our engineering partners and clients to develop the best solutions through Early Contractor Involvement (ECI) or constructability services.



Traylor Construction Group

HARNESS THE FULL OFFERINGS OF TRAYLOR CONSTRUCTION GROUP

To continuously improve our services, Ballard entered into a strategic partnership in 2017 with the Traylor Construction Group, a financially strong entity comprised of a family of companies offering a complete solution to our clients. With this partnership, we offer our clients heavy civil, underground/tunneling, precast concrete manufacturing, steel erection, commercial electrical/SCADA, mechanical, and fabrication, in addition to marine and underwater solutions and services. This partnership has also expanded Ballard's access to equipment and fleet to perform projects nationwide.





TRAYLOR CONSTRUCTION GROUP OFFICES:

WASHOUGAL, WA (HOME OFFICE) / LOOMIS, CA / LONG BEACH, CA / DENVER, CO / NEENAH, WI / YORKVILLE, IL / EVANSVILLE, IN / DETROIT, MI / WICKCLIFFE, KY / BATON ROUGE, LA / ALEXANDRIA, VA / GREENVILLE, SC / BALTIMORE, MD / BRADENTON, FL